





# Assembly Point 2



Bus Parking

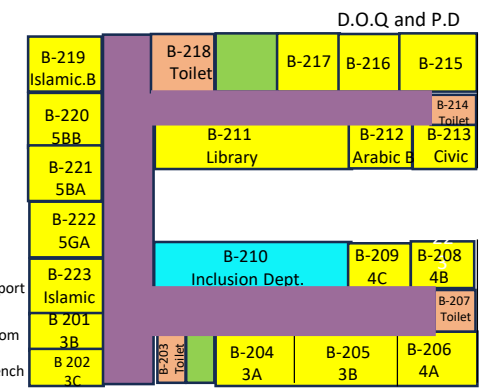
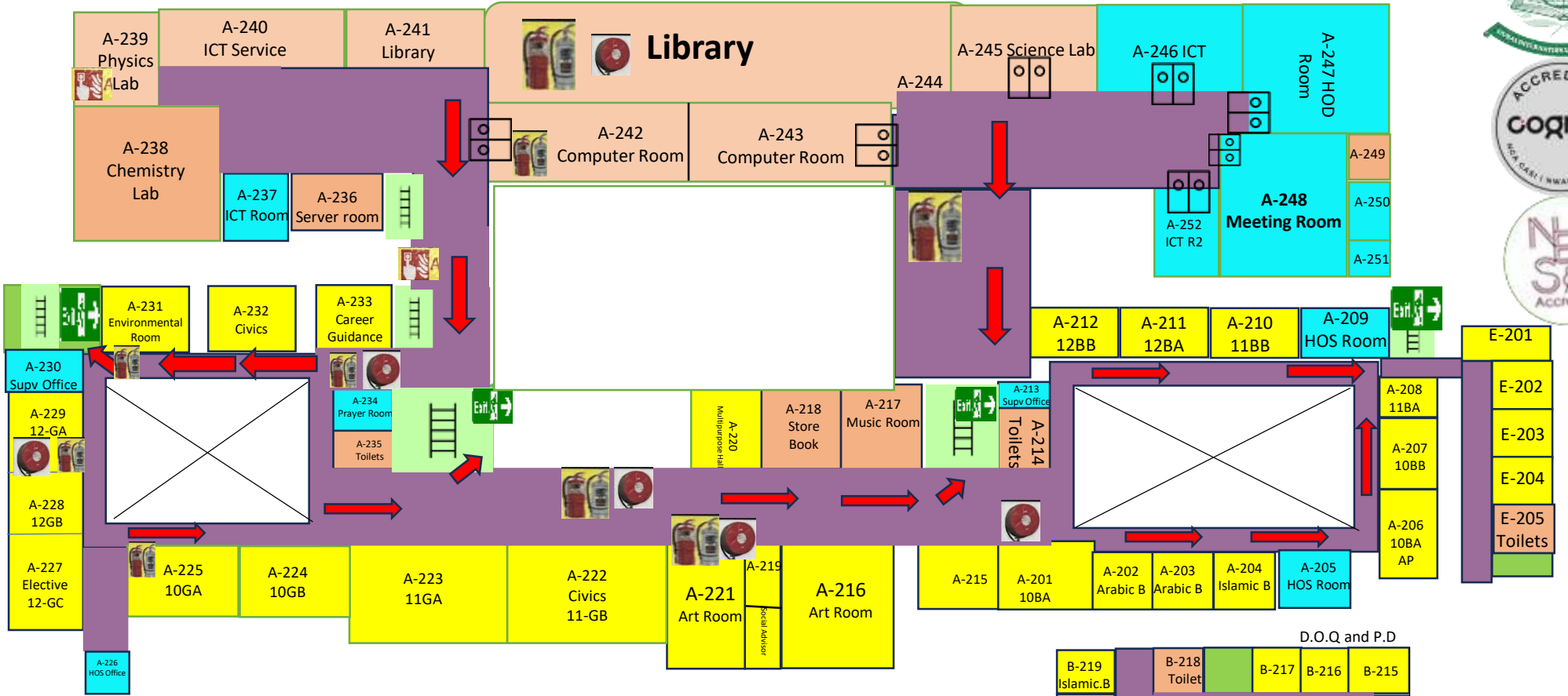


- D-201
- D-202
- D-203
- D-204 Toilet
- D-205 Toilet
- D-206
- D-207
- D-208

- C-205
- C-206
- C-204
- C-203
- C-202

- Office
- Staircase
- Corridor
- Facilities
- Room

# First Floor



EMERGENCY CONTACT NUMBERS	
• Ambulance	998
• Fire	997
• Police	999
• Electricity	991
• Water	992



Emergency Exit



Fire Alarm



Fire Hose Reel



Fire Extinguisher